



4111 Bakerview Spur  
Bellingham, WA 98226  
(360) 676-7433

# 2016 Report & Transit Development Plan 2017 – 2022



Date of Public Hearing: July 20, 2017

## **Table of Contents**

Section I: Organization .....	1
Section II: Physical Plant .....	4
Section III: Service Characteristics .....	4
Section IV: Service Connectors.....	7
Section V: Activities in 2016 .....	8
Transportation Objectives 2016 .....	10
Section VI: Focus Areas - 2017 - 2022:.....	11
Section VII: Proposed Changes - 2017 – 2022.....	12
Section VIII: Capital Improvement Program – 2016 – 2023 .....	14
Section IX: Operating Data, 2016 - 2022 .....	15
Section X: Operating Revenues and Expenditures - 2017 - 2023 .....	16
Appendix A: List of Rolling Stock, Facilities and Equipment .....	24

## **Section I: Organization**

### **Agency Description**

Whatcom Transportation Authority (WTA) provides public transportation services throughout Whatcom County in Northwest Washington State. Our services include Fixed Route, Paratransit, Zone Service and a Vanpool program.

WTA's mission is to enhance our community by:

- Delivering safe, reliable, efficient and friendly service
- Offering environmentally sound transportation choices
- Providing leadership in creating innovative transportation solutions
- Partnering with our community to improve transportation systems

WTA serves the city of Bellingham as well as the smaller towns and communities of Ferndale, Lynden, Blaine and Birch Bay, Lummi Nation, Sudden Valley, Kendall, Everson, Nooksack and Sumas. We also cooperate with Skagit Transit in neighboring Skagit County, to provide service between Bellingham and Mount Vernon. WTA plays a major role in transporting students to Western Washington University, to three local colleges, and to middle schools and high schools throughout the county.

### **Governing Body and Public Processes**

WTA is governed by a ten member board of directors composed of elected officials from jurisdictions located in its service area:

- Bellingham City Council Members (2 positions)
- Mayor of Bellingham
- City of Blaine - Elected official
- City of Ferndale - Elected official
- City of Lynden - Elected official
- Cities of Everson/Nooksack/Sumas - Elected official
- Whatcom County Council Member
- Whatcom County Executive
- Labor Representative (non-voting)

WTA's Community Advisory Panel is composed of approximately 20 Whatcom County residents, most of whom also serve as members of the Citizens' Transportation Advisory Group. Advisory Panel members represent different regions of the county, diverse professional disciplines, a wide range of stakeholders (including neighborhoods, schools, universities, tribes, social and health services) and different ages and abilities. WTA's Community Advisory Panel meets five times per year to review and discuss performance reports, unmet service needs, the annual budget and other major agency initiatives.

## 2016 Board Members

Paul Greenough	Blaine City Council — Board Chairperson
Jim Ackerman	Mayor of Nooksack — Board Vice-Chairperson
Kelli Linville	Mayor of Bellingham
Jack Louws	Whatcom County Executive
Roxanne Murphy	Bellingham City Council
Michael Lilliquist	Bellingham City Council
Scott Korthuis	Mayor of Lynden
Satpal Sidhu	Whatcom County Council
Cathy Watson	Ferndale City Council
Mark Lowry	Amalgamated Transit Union — Non-Voting Labor Representative

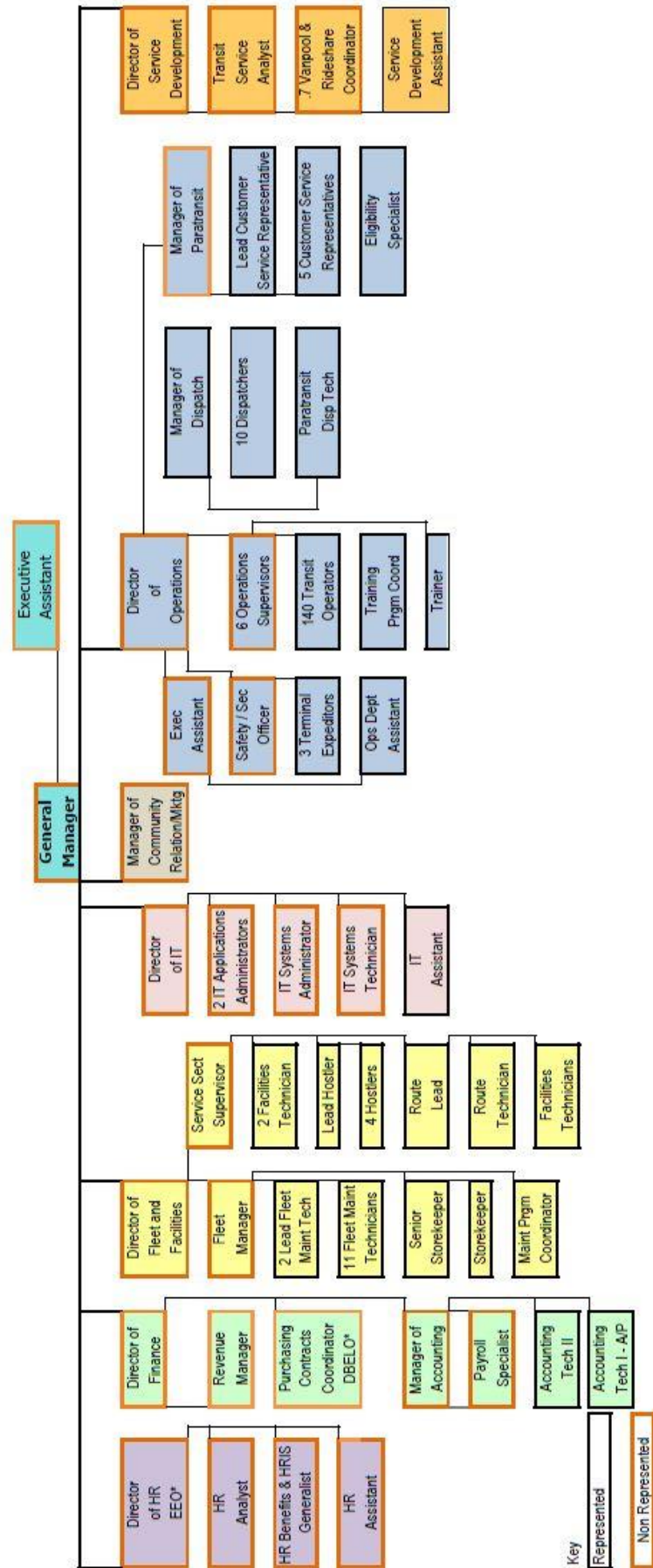
As approved in the 2016 Budget, the Whatcom Transportation Authority had the authority to employ:

<b>Division</b>	<b>Full Time Equivalents</b>
Executive Administration	2.00
Community Relations and Marketing	1.00
Human Resources	4.00
Finance	7.00
Information Technology (IT)	6.00
Fleet and Facilities	30.00
Operations	176.00
Service Development	3.70
<b>Total</b>	<b>229.70</b>

2016  
Organizational Chart

Board of Directors

Elected Officials from Bellingham (3), Whatcom County (2), Lynden (1), Blaine (1), Ferndale (1), Everson / Nooksack / Sumas (1)



\* EEO - Equal Employment Officer DBELO - Disadvantaged Business Enterprise Liaison Officer



## Section II: Physical Plant

WTA's Maintenance, Operations and Administration building (MOAB) is located at 4111 Bakerview Spur, Bellingham, Washington.

### Transit Stations

- Bellingham Station — located on the corner of Railroad Ave and Magnolia St. in downtown Bellingham. This facility includes a customer service office, 10 passenger loading gates and is served by 24 routes.
- Cordata Station — located on the corner of Cordata Pkwy and Short St. in Bellingham. This facility has a 70-stall park & ride, 3 passenger loading areas and is served by 12 routes.
- Ferndale Station — located at I-5 and Axton Rd. in Ferndale. This facility has a 131-stall park & ride, 3 passenger loading areas and is served by 3 routes.
- Lynden Station — located at Main St. and 10th in Lynden. This facility has an 89-stall park & ride, 2 passenger loading areas and is served by 2 routes.

## Section III: Service Characteristics

Our services include Fixed Route (including route deviated "Flex" service), Paratransit, Zone Service, and a Vanpool program.

### Fixed Routes

WTA serves Bellingham, Ferndale, Lynden, Blaine and Birch Bay, Lummi Nation, Sudden Valley, Kendall, Everson, Nooksack and Sumas. We cooperate with Skagit Transit, in neighboring Skagit County, to provide service between Bellingham and Mount Vernon. WTA plays a major role in transporting students to Western Washington University, to three local colleges, and to middle schools and high schools throughout the county.

WTA offers 30 fixed routes, including a network of four high-frequency corridors within Bellingham. We provide service seven days a week, with more limited service on Saturdays, Sundays and evenings. The following guidelines generally apply:

- On weekdays, service is available in most areas from about 6:00 am to 7:30 pm.
- Saturday service is available in many areas from about 9:00 am to 6:30 pm.
- On weekdays and Saturdays, later service is available in a few areas, up to 10:30 pm.
- Sunday service is available in limited areas, from about 8:00 am to 9:50 pm.

Routes that offer flex service serve bus stops on a regular schedule, and can also "flex" off-route within the flex service area. Advance reservations are required.

Flex service connects people in three parts of Whatcom County with Bellingham, and locations along the way. Flex service is offered on the following routes:

- 1) Rt 55 Blaine/Birch Bay via Ferndale Station to Cordata Station.
- 2) Rt 71X Everson/Nooksack/Sumas to Cordata Station.
- 3) Rt 72X Kendall via Mt. Baker Highway to Bellingham Station.

## **Paratransit**

WTA's paratransit service provides curb-to-curb (and if needed, door-to-door) transportation to riders whose disability prevents them from riding our fixed route bus system. Paratransit service is designed to be equal to, not better than our fixed route service. For this reason, paratransit's hours of operation mirror those of our fixed routes. The service area is within 0.75 miles of all fixed routes. Like fixed routes, paratransit is public transportation, so riders will often share their rides with others. Grouping rides efficiently is essential for meeting rider demand, as hundreds of trips are scheduled every day. Riders can book paratransit trips for any type of trip; no trip purpose is more important than another. Everyone who rides paratransit must qualify and be approved before riding.

## **Zone Service**

Zone service provides limited demand responsive transit service to rural areas of Whatcom County. There are no eligibility requirements for using zone service; anyone within the designated area can request a ride. Service is only available to each zone on certain days of the week. Advance reservations are required.

## **Vanpool**

Our Vanpool program allows groups of people to "lease" a WTA-owned van for the purpose of commuting to and from a common worksite. The vanpool group pays a fare, based on the number of miles the van travels each month. So, vanpoolers share the cost of commuting, and no one puts miles on their own car. Fares are designed to cover all costs to operate the van, including fuel, maintenance and insurance. In 2016, the average number of vans in service was 24.

## **2016 Changes to Service**

### **All trips on Routes 71X and 72X now offer Flex Service**

We now offer flex service on all trips on Route 71X to Everson, Nooksack and Sumas, and Route 72X to Kendall. We made minor schedule adjustments to accommodate this change.

## Fares

The latest Fare Rates and Rules was implemented January 2, 2015.

### Fixed/Flex Routes Fare Rates

#### Cash Fare: Single Ride

Cash Fare.....	\$1.00
Reduced Fare.....	\$0.50
Route 80X Cash Fare (within one county).....	\$1.00
Route 80X Cash Fare (between counties) .....	\$2.00
Route 80X Reduced Fare (within one county).....	\$0.50
Route 80X Reduced Fare (between counties) .....	\$1.00
Ages 7 and under and 75+ .....	Free

#### Passes:

Day Pass .....	\$3.00
11-Ride Pass.....	\$10.00
31-Day Pass.....	\$25.00
92-Day Pass.....	\$70.00
Select (for Veterans, Seniors and Riders with Disabilities) 31-Day Pass.....	\$13.00
Select (for Veterans, Seniors and Riders with Disabilities) 92-Day Pass.....	\$35.00
Youth 31-Day Pass.....	\$15.00
Youth 92-Day Pass.....	\$40.00
Student 31-Day Pass.....	\$15.00
Student 92-Day Pass.....	\$40.00
Skagit-Whatcom Day Pass.....	\$6.00
County Connector 31-Day Pass.....	\$50.00
County Connector Youth/Student/Reduced/Select 31-Day Pass.....	\$25.00

**Smart Cards:** .....\$2.00

**Regional Reduced Fare Card** .....\$3.00

### Paratransit Fare Rates

#### Cash Fare: Single Ride

Cash Fare.....	\$1.00
Ages 75+ .....	FREE

#### Passes:

Paratransit Calendar Month Pass.....	\$13.00
Paratransit Calendar Quarter Pass.....	\$35.00



**Zone Service Fare Rates**

**Cash Fare: Single Ride**

Cash Fare.....\$1.00

**Vanpool Fare Rates**

Vanpool fares are designed to recover 100% of direct costs. Fares for vanpool vehicles are charged based on the monthly miles logged per van.

**Section IV: Service Connectors**

WTA provides service to all multi-modal facilities in Whatcom County except Bellingham International Airport. With our Strategic Plan approved in March of 2017, we will serve the Bellingham International Airport half the distance closer to the terminal than we did before. We have also entered an agreement with the Port of Bellingham to allow our riders to use their remote parking lot shuttle to deliver them to the terminal. Route 80X connects Whatcom and Skagit counties and is jointly operated by WTA and Skagit Transit. Riders of Route 80X can transfer in Skagit County to routes serving Island and Snohomish counties. In 2016, there were 33,555 boarding’s on WTA’s portion of Route 80X. The average one-way trip was 25 miles.

WTA coordinates its service with a number of public and private transportation providers in Whatcom County including:

- AMTRAK
- Greyhound, Airporter Service, BoltBus and other regional carriers
- Lummi Island Ferry
- Lummi Nation Transit

WTA serves most public and many private schools, as well as three colleges and a university. The population of these schools varies from over 15,000 students and faculty at Western Washington University, and 1,200 students and faculty at Northwest Indian College, to a few hundred at alternative high schools in Bellingham and Ferndale. There are elementary schools in the rural Mt. Baker, Meridian, and Nooksack school districts that do not have scheduled service.

## Section V: Activities in 2016

- Entered into a new multi-year fuel contract
- Completed second round of negotiations with Amalgamated Transit Union (ATU), and ATU ratified the new contract
- Made several advancements in farebox project, including ability to receive GPS from fareboxes, and configuring Wi-Fi probing
- Replaced maintenance operations and administrative offices core switch with redundant switches
- Replaced WTA's Wi-Fi System
- Completed and distributed required Affordable Care Act reports to employees
- Worked with Smart Trips staff to provide "how to ride the bus" instruction to 1,300 Whatcom County 7<sup>th</sup> Graders
- Redesigned Wellness Program for April rollout
- Celebrated Transit Operator Appreciation Day
- New Hires and Promotions: Twenty Four Transit Operators, an IT Systems Technician, Electronic System Technician, an Administrative Assistant, a Department Assistant, a Customer Service Representative, a Lead Customer Service Representative, two Fleet Maintenance Technicians, an HR Generalist, a Training Assistant, two Operations Supervisors, a Terminal Expeditor, and a Hostler.
- Staff attended the following trainings or conferences: American Public Transportation Association (APTA) Communications and Marketing Workshop, APTA Mobility Management and Travel Training Workshop, National Federation Transit Drug and Alcohol Program Conference, Association of Washington Cities Wellness Forum, Washington State Transit Insurance Pool (WSTIP) Mobility Management Workshop, WSTIP "Origami" Workshop (accident/incident management software), Health and Safety Conference, Bellingham/Whatcom Chamber of Commerce's "Leadership Whatcom," training in Understanding Conflict, Advanced Excel, Project Management, SharePoint, Trapeze PLAN, Transit Bus Glass and Replacement and Repair National Human Resources Conference, workforce development training, labor conference, Transit Safety Institute's Substance Abuse Program, Association of Washington Cities' Healthcare Regional Forum, Washington State Social Media Summit Staff, hiring veterans, workforce development, labor relations and selecting a payroll system, annual Washington State Department of Transportation Conference, one staff member completed the Leadership Whatcom program, trainings regarding the triennial review, emotional intelligence and labor relations.
- Created first draft of the Strategic Plan service plan
- Submitted the Transit Improvement Plan
- Awarded consultant contract for "Smart Bus," (intelligent transportation systems) to IBI
- Went live with "Trapeze Ops," a transit operations and integrated workforce management system
- Hosted the annual ADA Conference in April

- Participated in Bellingham Public School Transportation Levy Advisory Committee
- Contacted all "conditionally eligible" paratransit riders, and began transition to booking only rides for eligible trips
- Submitted two letters of interest for Washington State Regional Mobility Grants
- Submitted proposal for Federal Transportation Administration's "Rides to Wellness" grant program
- Celebrated two retirements
- Earned Washington State Transit Insurance Pool's "Safety Star" award, for the second consecutive year
- Completed "make ready" for eight new fixed route buses
- Completed LED lighting project
- Upgraded fleet management software
- Gathered input at five community meetings regarding the Strategic Plan
- Completed annual Transportation Development Plan report and Title VI report
- Completed final Affordable Care Act Reporting
- Completed a Greenhouse Gas Reduction Policy
- Hosted WTA's "Rodeo" and Family Fun Day
- Offered "Free Fare Week"
- Submitted grant applications for Expanding Bellingham Station and Connecting Communities in Rural Whatcom County
- Executed the ground lease with Ferndale Food Bank, awarded contracts for mobile armored car and for banking services
- Provided training in project management and harassment prevention
- Signed contract with Whatcom Community College for Universal Bus Pass program
- Received 19<sup>th</sup> consecutive audit with no findings, from Washington State
- Completed 2017 budget
- Submitted documents for triennial review
- Completed on-site training for new point-of-sale system
- Completed the Strategic Plan Service Plan
- Distributed 50,000 free day passes to social and health services agencies
- Provided service over the course of several snow days
- Ran a successful "Warm Hearts, Warm Hands" clothing drive, in partnership with ATU
- Upgraded WTA phone system
- Standardized fleet's cellular communications
- Took delivery of 13 new paratransit minibuses
- Completed 13 Cummins engine rebuilds
- "Released" six new transit operators, having completed their training
- Raised \$28,690 for United Way
- Provided Harassment Prevention training and Dangerous Intruder training to all employees

## Washington State Department of Transportation's Transportation Objectives 2016

- 1. Safety** - Improve public health and safety by reducing transportation-related fatalities and injuries
  - Earned Washington State Transit Insurance Pool's "Safety Star" award, for the second consecutive year
  - Provided training to employees on Preventing Harassment, How to Handle a Dangerous Intruder, and Preventing Substance Abuse
- 2. State of Good Repair** - Ensure the U.S. Proactively maintains critical transportation infrastructure in a state of good repair
  - Completed 13 Cummins ISL engine rebuilds
  - Took delivery of 13 new paratransit minibuses
  - At WTA headquarters: upgraded phone system, standardized fleet cellular communications, replaced core switch with redundant switches, replaced Wi-Fi system, introduced "Trapeze Ops," a transit operations and integrated workforce management system and upgraded fleet management software
- 3. Economic Competitiveness** - Promote transportation policies and investments that bring lasting and equitable economic benefits to the nation and its citizens
  - Entered into a Universal Bus Pass program with Whatcom Community College
  - Received 19<sup>th</sup> consecutive audit with no findings, from Washington State
- 4. Livable Communities** - Foster livable communities by integrating transportation policies, plans, and investments with coordinated housing and economic development policies to increase transportation choices and access to transportation services for all users.
  - Completed plan to expand service in 2017, through a Strategic Planning process
  - Partnered with Whatcom Council of Governments to provide classroom training and free bus passes to 1,300 7<sup>th</sup> graders in Whatcom County
  - Partnered with Whatcom Council of Governments to offer targeted outreach to seniors, to teach them how to ride fixed route buses
  - Hosted a "Gold Card Gathering," to promote free rides to seniors 75 and older
  - Offered Free Fare Week, a promotion to reach potential new riders
  - Offered two free fare days in support of Project Homeless Connect
  - Distributed 50,000 free day passes to social and health services agencies
  - Coordinated a successful "Warm Hearts, Warm Hands" clothing drive, in partnership with ATU

**5. Environmental Sustainability** – Advance environmentally sustainable policies and investments that reduce carbon and other harmful emissions from transportation sources.

- Completed Greenhouse Gas Reduction Policy
- Completed LED lighting project
- Participated in Puget Sound Energy's "Green Power Program," by purchasing power from renewable resources

## **Section VI: Focus Areas - 2017 - 2022:**

WTA's recently completed Strategic Plan establishes the following goals. These serve as our focus areas to guide our work in the coming years.

1. Increase Accessibility, Convenience and Attractiveness of Riding the Bus
  - a. Examples include introducing "Smart Bus" technology and expanding service
2. Actively Partner with our Community
  - a. Examples include partnering with Whatcom Smart Trips to offer how-to-ride outreach to all 7<sup>th</sup> graders in Whatcom County, as well as to local seniors
3. Right size Service to Match Community Needs
  - a. Examples include establishing a two-year cycle for service planning and reevaluating our vanpool program
4. Protect and Preserve our Environment
  - a. Examples include seeking grant funding for electric buses, and exploring the possibility of converting paratransit minibuses from gasoline to propane
5. Contribute to Whatcom County's Quality of Life
  - a. Examples include new service to connect rural communities and new Sunday service to communities outside of Bellingham
6. Cultivate Organizational Excellence
  - a. Examples include providing training to employees at all levels and succession planning for upcoming retirements

## Section VII: Proposed Changes - 2017 – 2022

2017	Preservation	Improvement
<b>Service</b>	Unknown	9% service expansion, North County service
<b>Equipment</b>	Replace 7 diesel buses	Farebox System
	Replace 13 paratransit vehicles	Trapeze Ridership Survey
	Replace 4 staff vehicles	Bellingham Station solar panels
<b>Facilities</b>	No change	MOAB LED Lighting Project
		Bellingham Station Bike Storage
		MOAB remodel-Phase 1
		Midway lot improvements
2018	Preservation	Improvement
<b>Service</b>	Unknown	
<b>Equipment</b>	Replace 4 vanpool vans	Intelligent Transportation Systems
	Replace 3 fixed route vehicles	Lease 3 electric fixed route vehicles
	Replace 6 paratransit vehicles	Install propane conversion kits on paratransit vehicles
<b>Facilities</b>	No change	Replace paratransit mobile data terminals
		Bellingham Transit Station remodel design and engineering
		MOAB Remodel-Phase 2
		Midway Lot improvements
		Install bus charging infrastructure
		Install propane fueling station
		Install additional bus lift
2019	Preservation	Improvement
<b>Service</b>	Unknown	Increase service by 2,000 hours
		Evaluate service to align with community growth
<b>Equipment</b>	Replace 14 fixed route vehicles	Intelligent Transportation Systems
	Replace 4 vanpool vans	
<b>Facilities</b>	No change	Bellingham Transit Station remodel construction
2020	Preservation	Improvement
<b>Service</b>	Unknown	Increase service by 2,000 hours
		Evaluate service to align with community growth
<b>Equipment</b>	Replace 4 vanpool vans	
	Replace 11 fixed route vehicles	
	Replace 11 paratransit vehicles	
<b>Facilities</b>	No change	Bellingham Transit Station construction
2021	Preservation	Improvement
<b>Service</b>	Unknown	Increase service by 2,000 hours
		Evaluate service to align with community growth
<b>Equipment</b>	Replace 8 fixed route vehicles	
	Replace 4 vanpool vans	
	Replace 8 paratransit vehicles	
	Replace 1 staff vehicle	
<b>Facilities</b>	No change	



<b>2022</b>	<b>Preservation</b>	<b>Improvement</b>
<b>Service</b>	Unknown	Increase service by 2,000 hours
		Evaluate service to align with community growth
<b>Equipment</b>	Replace 4 vanpool vans	
	Replace 8 fixed route vehicles	
	Replace 13 paratransit vehicles	
	Replace 5 staff vehicles	
<b>Facilities</b>	No change	

## Section VIII: Capital Improvement Program – 2016 – 2023

Category	2016	2017	2018	2019	2020	2021	2022	2023
Equipment	13,033	414,000	-	-	-	-	-	-
Facilities	328,689	2,513,000	2,205,000	1,250,000	150,000	150,000	-	-
Technology	834,183	536,000	3,100,000	600,000	100,000	100,000	100,000	100,000
Vehicles-Non-Revenue	59,403	120,000	-	-	-	129,000	170,000	-
Vehicles, Revenue	4,833,572	650,000	2,274,000	4,248,000	3,420,587	9,948,096	9,029,243	6,162,353
<b>Total</b>	<b>6,068,880</b>	<b>4,233,000</b>	<b>7,579,000</b>	<b>6,098,000</b>	<b>3,670,587</b>	<b>10,327,096</b>	<b>9,299,243</b>	<b>6,262,353</b>

## Section IX: Operating Data, 2016 - 2022

<b>FIXED ROUTE</b>	<b>Actual 2016</b>	<b>Budget 2017</b>	<b>2018</b>	<b>2019</b>	<b>2020</b>	<b>2021</b>	<b>2022</b>
Rev. Vehicle Hours	131,757	140,700	146,494	148,494	150,494	152,494	154,494
Annual. Vehicle Hours	139,812	149,297	155,445	157,567	159,689	161,811	163,934
Rev. Vehicle Miles	1,831,845	1,942,880	2,068,834	2,097,079	2,125,323	2,153,568	2,181,813
Annual Vehicle Miles	1,980,857	2,100,836	2,237,030	2,267,571	2,298,112	2,328,653	2,359,194
Peak Vehicles	44	48	50	50	51	52	52
Passengers (unlinked)	4,701,668	5,356,802	4,725,000	4,725,000	4,725,000	5,197,500	5,457,375
Fatalities	0						
Reportable Injuries	2						
Collisions	1						
Fuel (Diesel) consumed	391,155	433,745	447,406	453,514	459,622	465,730	471,838

<b>PARATRANSIT</b>	<b>Actual 2016</b>	<b>Budget 2017</b>	<b>2018</b>	<b>2019</b>	<b>2020</b>	<b>2021</b>	<b>2022</b>
Rev. Vehicle Hours	64,215	67,302	68,309	69,676	71,766	73,919	76,136
Annual. Vehicle Hours	71,292	74,356	75,469	76,979	79,288	81,667	84,117
Rev. Vehicle Miles	853,744	916,890	907,012	925,152	952,907	981,494	1,010,939
Annual Vehicle Miles	963,267	1,024,429	1,101,393	1,033,661	1,064,671	1,096,611	1,129,509
Peak Vehicles	30	32	33	33	34	35	36
Passengers	211,686	215,756	220,734	225,149	231,904	238,861	246,026
Fatalities	0						
Reportable Injuries	3						
Collisions	0						
Fuel (Gas) consumed	143,286	148,287	164,387	154,277	158,906	163,673	168,583

<b>VANPOOL</b>	<b>Actual 2016</b>	<b>Budget 2017</b>	<b>2018</b>	<b>2019</b>	<b>2020</b>	<b>2021</b>	<b>2022</b>
Rev. Vehicle Hours	8,006	7,642	6,466	6,143	6,143	6,143	6,143
Annual. Vehicle Hours	8,006	7,657	6,479	6,155	6,155	6,155	6,155
Rev. Vehicle Miles	443,551	423,249	357,564	339,686	339,708	339,708	339,708
Annual Vehicle Miles	443,551	423,805	358,034	340,132	340,154	340,154	340,154
Peak Vehicles	25	23	21	20	20	20	20
Passengers	51,944	49,537	41,719	39,633	39,633	39,633	39,633
Fatalities	0						
Reportable Injuries	0						
Collisions	0						
Fuel (Gas) consumed	27,878	24,476	22,517	21,392	31,392	21,392	21,392

Reportable injuries = transported to hospital  
Collisions = greater than \$5,000 repair costs

## Section X: Operating Revenues and Expenditures - 2017 - 2023

2017 BUDGET WHATCOM TRANSPORTATION AUTHORITY					
	Undesignated	Operating Reserve	Capital Reserve	Fleet Reserve	Total
<b>Beginning Cash Balance</b>	<b>\$19,723,648</b>	<b>\$7,605,204</b>	<b>\$3,641,243</b>	<b>\$2,101,521</b>	<b>\$33,071,616</b>
<b>Revenues</b>					
Sales Tax	24,453,811				24,453,811
Farebox	2,912,029				2,912,029
Contract Revenue	40,000				40,000
Vanpool Income	192,960				192,960
Operating Grants	584,549				584,549
Other	194,785				194,785
Interest Income	194,977	76,052	36,412	21,015	328,456
<b>Total Revenues</b>	<b>28,573,110</b>	<b>76,052</b>	<b>36,412</b>	<b>21,015</b>	<b>28,706,590</b>
<b>Operating Expenses</b>					
Fixed Route	21,022,141				21,022,141
Paratransit	7,624,661				7,624,661
Vanpool	567,185				567,185
Depreciation	5,167,189				5,167,189
<b>Total Expense</b>	<b>34,381,176</b>	<b>0</b>	<b>0</b>	<b>0</b>	<b>34,381,176</b>
Add back Depreciation	5,167,189				5,167,189
<b>Total Available</b>	<b>-640,877</b>	<b>76,052</b>	<b>36,412</b>	<b>21,015</b>	<b>-507,397</b>
<b>Grant Revenue</b>					
Federal Capital Grants			1,440,000	0	1,440,000
Paratransit Vehicles				450,500	450,500
Fixed Route Vehicles				0	0
Vanpool Vehicles				96,000	96,000
<b>Total Grant Revenue</b>	<b>0</b>		<b>1,440,000</b>	<b>546,500</b>	<b>1,986,500</b>
<b>Capital Expenditures</b>					
Vehicles				650,000	650,000
Non-Revenue Vehicles				120,000	120,000
Facilities			2,577,000		2,577,000
Technology			836,000		836,000
Equipment			50,000		50,000
<b>Total Capital Expenditures</b>			<b>3,463,000</b>	<b>770,000</b>	<b>4,233,000</b>
<b>Grant Revenue Less Capital Exp</b>	<b>0</b>	<b>0</b>	<b>-2,023,000</b>	<b>-223,500</b>	<b>-2,246,500</b>
<b>Transfers (net)</b>	<b>-2,105,053</b>	<b>-81,256</b>	<b>1,985,345</b>	<b>200,964</b>	<b>0</b>
<b>Ending Cash Balance, 12/31/2017</b>	<b>\$16,977,719</b>	<b>\$7,600,000</b>	<b>\$3,640,000</b>	<b>\$2,100,000</b>	<b>\$30,317,719</b>

2018 WHATCOM TRANSPORTATION AUTHORITY					
	Undesignated	Operating Reserve	Capital Reserve	Fleet Reserve	Total
<b>Beginning Cash Balance</b>	<b>\$16,977,719</b>	<b>\$7,600,000</b>	<b>\$3,640,000</b>	<b>\$2,100,000</b>	<b>\$30,317,719</b>
<b>Revenues</b>					
Sales Tax	25,456,417				25,456,417
Farebox	3,051,457				3,051,457
Contract Revenue	0				0
Vanpool Income	177,522				177,522
Operating Grants	440,416				440,416
Other	200,629				200,629
Interest Income	277,458	75,983	37,694	33,313	424,448
<b>Total Revenues</b>	<b>29,603,899</b>	<b>75,983</b>	<b>37,694</b>	<b>33,313</b>	<b>29,750,889</b>
<b>Operating Expenses</b>					
Fixed Route	21,559,435				21,559,435
Paratransit	8,544,364				8,544,364
Vanpool	530,260				530,260
Depreciation	5,270,532				5,270,532
<b>Total Expense</b>	<b>35,904,591</b>	<b>0</b>	<b>0</b>	<b>0</b>	<b>35,904,591</b>
Add back Depreciation	5,270,532				5,270,532
<b>Total Available</b>	<b>-1,030,160</b>	<b>75,983</b>	<b>37,694</b>	<b>33,313</b>	<b>-883,170</b>
<b>Grant Revenue</b>					
Federal Capital Grants			983,000		983,000
Paratransit Vehicles				637,500	637,500
Fixed Route Vehicles				1,288,200	1,288,200
Vanpool Vehicles					0
<b>Total Grant Revenue</b>	<b>0</b>	<b>0</b>	<b>983,000</b>	<b>1,925,700</b>	<b>2,908,700</b>
<b>Capital Expenditures</b>					
Vehicles				2,274,000	2,274,000
Non-Revenue Vehicles					0
Facilities			2,205,000		2,205,000
Technology			3,100,000		3,100,000
Equipment					0
<b>Total Capital Expenditures</b>	<b>0</b>	<b>0</b>	<b>5,305,000</b>	<b>2,274,000</b>	<b>7,579,000</b>
<b>Grant Revenue Less Capital Exp</b>	<b>0</b>	<b>0</b>	<b>-4,322,000</b>	<b>-348,300</b>	<b>-4,670,300</b>
<b>Transfers (net)</b>	<b>-5,191,136</b>	<b>-728,052</b>	<b>3,861,106</b>	<b>2,058,082</b>	<b>0</b>
<b>Ending Cash Balance, 12/31/2018</b>	<b>\$10,756,423</b>	<b>\$6,947,931</b>	<b>\$3,216,800</b>	<b>\$3,843,095</b>	<b>\$24,764,249</b>

2019 WHATCOM TRANSPORTATION AUTHORITY					
	Undesignated	Operating Reserve	Capital Reserve	Fleet Reserve	Total
<b>Beginning Balance</b>	<b>\$10,756,423</b>	<b>\$6,947,931</b>	<b>\$4,505,000</b>	<b>\$2,554,895</b>	<b>\$24,764,249</b>
<b>Revenues</b>					
Sales Tax	26,500,130				26,500,130
Farebox	3,797,103				3,797,103
Contract Revenue	0				0
Vanpool Income	168,646				168,646
Operating Grants	440,416				440,416
Other	206,647				206,647
Interest Income	241,640	52,109	33,788	19,162	346,699
<b>Total Revenues</b>	<b>31,354,582</b>	<b>52,109</b>	<b>33,788</b>	<b>19,162</b>	<b>31,459,641</b>
<b>Operating Expenses</b>					
Fixed Route	22,405,034				22,405,034
Paratransit	8,921,640				8,921,640
Vanpool	512,582				512,582
Depreciation	5,375,943				5,375,943
<b>Total Expense</b>	<b>37,215,199</b>	<b>0</b>	<b>0</b>	<b>0</b>	<b>37,215,199</b>
Add back Depreciation	5,375,943				5,375,943
<b>Total Available</b>	<b>-484,674</b>	<b>52,109</b>	<b>33,788</b>	<b>19,162</b>	<b>-379,615</b>
<b>Grant Revenue</b>					
Federal Capital Grants			880,000		880,000
Paratransit Vehicles					0
Fixed Route Vehicles				3,280,000	3,280,000
Vanpool Vehicles				118,400	118,400
<b>Total Grant Revenue</b>	<b>0</b>	<b>0</b>	<b>880,000</b>	<b>3,398,400</b>	<b>4,278,400</b>
<b>Capital Expenditures</b>					
Vehicles				4,248,000	4,248,000
Non-Revenue Vehicles					0
Facilities			1,250,000		1,250,000
Technology			600,000		600,000
Equipment					0
<b>Total Capital Expenditures</b>	<b>0</b>	<b>0</b>	<b>1,850,000</b>	<b>4,248,000</b>	<b>6,098,000</b>
<b>Grant Revenue Less Capital Exp</b>	<b>0</b>	<b>0</b>	<b>-970,000</b>	<b>-849,600</b>	<b>-1,819,600</b>
<b>Transfers (net)</b>	<b>667,116</b>	<b>221,234</b>	<b>-1,718,788</b>	<b>830,438</b>	<b>0</b>
<b>Ending Balance, 12/31/2019</b>	<b>\$10,938,865</b>	<b>\$7,221,275</b>	<b>\$1,850,000</b>	<b>\$2,554,895</b>	<b>\$22,565,034</b>



2020 WHATCOM TRANSPORTATION AUTHORITY					
	Undesignated	Operating Reserve	Capital Reserve	Fleet Reserve	Total
<b>Beginning Balance</b>	<b>\$10,938,865</b>	<b>\$7,221,275</b>	<b>\$1,850,000</b>	<b>\$2,554,895</b>	<b>\$22,565,034</b>
<b>Revenues</b>					
Sales Tax	27,586,636				27,586,636
Farebox	3,799,394				3,799,394
Contract Revenue	0				0
Vanpool Income	168,646				168,646
Operating Grants	440,416				440,416
Other	212,847				212,847
Interest Income	228,714	54,160	13,875	19,162	315,910
<b>Total Revenues</b>	<b>32,436,653</b>	<b>54,160</b>	<b>13,875</b>	<b>19,162</b>	<b>32,523,849</b>
<b>Operating Expenses</b>					
Fixed Route	23,371,634				23,371,634
Paratransit	9,410,995				9,410,995
Vanpool	533,955				533,955
Depreciation	5,483,462				5,483,462
<b>Total Expense</b>	<b>38,800,046</b>	<b>0</b>	<b>0</b>	<b>0</b>	<b>38,800,046</b>
Add back Depreciation	5,483,462				5,483,462
<b>Total Available</b>	<b>-879,931</b>	<b>54,160</b>	<b>13,875</b>	<b>19,162</b>	<b>-792,735</b>
<b>Grant Revenue</b>					
Federal Capital Grants					0
Paratransit Vehicles				1,239,922	1,239,922
Fixed Route Vehicles				1,447,884	1,447,884
Vanpool Vehicles				121,600	121,600
<b>Total Grant Revenue</b>	<b>0</b>	<b>0</b>	<b>0</b>	<b>2,809,406</b>	<b>2,809,406</b>
<b>Capital Expenditures</b>					
Vehicles				3,420,587	3,420,587
Non-Revenue Vehicles					0
Facilities				150,000	150,000
Technology				100,000	100,000
Equipment					0
<b>Total Capital Expenditures</b>	<b>0</b>	<b>0</b>	<b>0</b>	<b>3,670,587</b>	<b>3,670,587</b>
<b>Grant Revenue Less Capital Exp</b>	<b>0</b>	<b>0</b>	<b>0</b>	<b>-861,181</b>	<b>-861,181</b>
<b>Transfers (net)</b>	<b>490,951</b>	<b>280,905</b>	<b>-1,613,875</b>	<b>842,019</b>	<b>0</b>
<b>Ending Balance, 12/31/2020</b>	<b>\$10,549,884</b>	<b>\$7,556,339</b>	<b>\$250,000</b>	<b>\$2,554,895</b>	<b>\$20,911,118</b>

2021 WHATCOM TRANSPORTATION AUTHORITY					
	Undesignated	Operating Reserve	Capital Reserve	Fleet Reserve	Total
<b>Beginning Balance</b>	<b>\$10,549,884</b>	<b>\$7,556,339</b>	<b>\$250,000</b>	<b>\$2,554,895</b>	<b>\$20,911,118</b>
<b>Revenues</b>					
Sales Tax	28,717,688				28,717,688
Farebox	4,173,827				4,173,827
Contract Revenue	0				0
Vanpool Income	168,646				168,646
Operating Grants	440,416				440,416
Other	219,232				219,232
Interest Income	215,047	56,673	1,875	19,162	292,756
<b>Total Revenues</b>	<b>33,934,856</b>	<b>56,673</b>	<b>1,875</b>	<b>19,162</b>	<b>34,012,565</b>
<b>Operating Expenses</b>					
Fixed Route	24,133,114				24,133,114
Paratransit	9,941,123				9,941,123
Vanpool	540,646				540,646
Depreciation	5,620,548				5,620,548
<b>Total Expense</b>	<b>40,235,431</b>	<b>0</b>	<b>0</b>	<b>0</b>	<b>40,235,431</b>
Add back Depreciation	5,620,548				5,620,548
<b>Total Available</b>	<b>-680,027</b>	<b>56,673</b>	<b>1,875</b>	<b>19,162</b>	<b>-602,318</b>
<b>Grant Revenue</b>					
Federal Capital Grants					0
Paratransit Vehicles				928,812	928,812
Fixed Route Vehicles				6,959,501	6,959,501
Vanpool Vehicles				124,800	124,800
<b>Total Grant Revenue</b>	<b>0</b>	<b>0</b>	<b>0</b>	<b>8,013,113</b>	<b>8,013,113</b>
<b>Capital Expenditures</b>					
Vehicles				9,948,096	9,948,096
Non-Revenue Vehicles				129,000	129,000
Facilities				150,000	150,000
Technology				100,000	100,000
Equipment					0
<b>Total Capital Expenditures</b>	<b>0</b>	<b>0</b>	<b>0</b>	<b>10,327,096</b>	<b>10,327,096</b>
<b>Grant Revenue Less Capital Exp</b>	<b>0</b>	<b>0</b>	<b>0</b>	<b>-2,313,983</b>	<b>-2,313,983</b>
<b>Transfers (net)</b>	<b>-2,530,733</b>	<b>237,786</b>	<b>-1,875</b>	<b>2,294,822</b>	<b>0</b>
<b>Ending Balance, 12/31/2021</b>	<b>\$7,339,124</b>	<b>\$7,850,798</b>	<b>\$250,000</b>	<b>\$2,554,895</b>	<b>\$17,994,817</b>

2022 WHATCOM TRANSPORTATION AUTHORITY					
	Undesignated	Operating Reserve	Capital Reserve	Fleet Reserve	Total
<b>Beginning Balance</b>	<b>\$7,339,124</b>	<b>\$7,850,798</b>	<b>\$250,000</b>	<b>\$2,554,895</b>	<b>\$17,994,817</b>
<b>Revenues</b>					
Sales Tax	29,895,113				29,895,113
Farebox	4,176,257				4,176,257
Contract Revenue	0				0
Vanpool Income	168,646				168,646
Operating Grants	440,416				440,416
Other	225,809				225,809
Interest Income	172,009	58,881	1,875	19,162	251,927
<b>Total Revenues</b>	<b>35,078,250</b>	<b>58,881</b>	<b>1,875</b>	<b>19,162</b>	<b>35,158,168</b>
<b>Operating Expenses</b>					
Fixed Route	24,742,487				24,742,487
Paratransit	10,465,488				10,465,488
Vanpool	552,178				552,178
Depreciation	5,761,062				5,761,062
<b>Total Expense</b>	<b>41,521,215</b>	<b>0</b>	<b>0</b>	<b>0</b>	<b>41,521,215</b>
Add back Depreciation	5,761,062				5,761,062
<b>Total Available</b>	<b>-681,903</b>	<b>58,881</b>	<b>1,875</b>	<b>19,162</b>	<b>-601,985</b>
<b>Grant Revenue</b>					
Federal Capital Grants			0		0
Paratransit Vehicles				1,554,613	1,554,613
Fixed Route Vehicles				5,632,229	5,632,229
Vanpool Vehicles				128,000	128,000
<b>Total Grant Revenue</b>	<b>0</b>	<b>0</b>	<b>0</b>	<b>7,314,842</b>	<b>7,314,842</b>
<b>Capital Expenditures</b>					
Vehicles				9,029,243	9,029,243
Non-Revenue Vehicles			0	170,000	170,000
Facilities			0	0	0
Technology			100,000	0	100,000
Equipment				0	0
<b>Total Capital Expenditures</b>	<b>0</b>	<b>0</b>	<b>100,000</b>	<b>9,199,243</b>	<b>9,299,243</b>
<b>Grant Revenue Less Capital Exp</b>	<b>0</b>	<b>0</b>	<b>-100,000</b>	<b>-1,884,401</b>	<b>-1,984,401</b>
<b>Transfers (net)</b>	<b>-2,014,235</b>	<b>200,871</b>	<b>-51,875</b>	<b>1,865,239</b>	<b>0</b>
<b>Ending Balance, 12/31/2022</b>	<b>\$4,642,986</b>	<b>\$8,110,550</b>	<b>\$100,000</b>	<b>\$2,554,895</b>	<b>\$15,408,431</b>

2023 WHATCOM TRANSPORTATION AUTHORITY					
	Undesignated	Operating Reserve	Capital Reserve	Fleet Reserve	Total
<b>Beginning Balance</b>	<b>\$4,642,986</b>	<b>\$8,110,550</b>	<b>\$100,000</b>	<b>\$2,554,895</b>	<b>\$15,408,431</b>
<b>Revenues</b>					
Sales Tax	31,120,813				31,120,813
Farebox	4,178,760				4,178,760
Contract Revenue	0				0
Vanpool Income	168,646				168,646
Operating Grants	440,416				440,416
Other	232,583				232,583
Interest Income	134,977	60,829	750	19,162	215,718
<b>Total Revenues</b>	<b>36,276,195</b>	<b>60,829</b>	<b>750</b>	<b>19,162</b>	<b>36,356,936</b>
<b>Operating Expenses</b>					
Fixed Route	25,359,287				25,359,287
Paratransit	11,093,912				11,093,912
Vanpool	563,788				563,788
Depreciation	5,905,089				5,905,089
<b>Total Expense</b>	<b>42,922,076</b>	<b>0</b>	<b>0</b>	<b>0</b>	<b>42,922,076</b>
Add back Depreciation	5,905,089				5,905,089
<b>Total Available</b>	<b>-740,792</b>	<b>60,829</b>	<b>750</b>	<b>19,162</b>	<b>-660,051</b>
<b>Grant Revenue</b>					
Federal Capital Grants			0		0
Paratransit Vehicles				615,863	615,863
Fixed Route Vehicles				4,219,046	4,219,046
Vanpool Vehicles				131,200	131,200
<b>Total Grant Revenue</b>	<b>0</b>	<b>0</b>	<b>0</b>	<b>4,966,109</b>	<b>4,966,109</b>
<b>Capital Expenditures</b>					
Vehicles				6,162,353	6,162,353
Non-Revenue Vehicles			0	0	0
Facilities			0	0	0
Technology			100,000	0	100,000
Equipment			0	0	0
<b>Total Capital Expenditures</b>	<b>0</b>	<b>0</b>	<b>100,000</b>	<b>6,162,353</b>	<b>6,262,353</b>
<b>Grant Revenue Less Capital Exp</b>	<b>0</b>	<b>0</b>	<b>-100,000</b>	<b>-1,196,244</b>	<b>-1,296,244</b>
<b>Transfers (net)</b>	<b>-1,500,558</b>	<b>224,226</b>	<b>99,250</b>	<b>1,177,082</b>	<b>0</b>
<b>Ending Balance, 12/31/2023</b>	<b>\$2,401,637</b>	<b>\$8,395,605</b>	<b>\$100,000</b>	<b>\$2,554,895</b>	<b>\$13,452,136</b>

Whatcom Transportation Authority							
Comparative Balance Sheet							
As Of December 31, 2010 - 2016							
							Unaudited
ASSETS	2010	2011	2012	2013	2014	2015	2016
<b>Current Assets:</b>							
Cash and Equivalents	\$ 21,360,399	\$ 20,027,467	\$ 24,983,075	\$ 25,927,583	\$ 29,249,884	\$ 30,881,534	\$ 33,071,616
Accounts Receivable	158,780	153,228	3,812,352	177,785	116,286	145,589	117,233
Interest Receivable	19,220	12,746	163,144	8,869	13,255	20,305	26,539
Taxes Receivable	3,352,158	3,566,888	7,757	3,861,901	4,009,555	4,130,209	4,383,548
Grants Receivable	753,255	2,896,203	141,177	1,056,320	284,646	274,708	226,709
Due From Gov. Units	77,340	105,920	223,292	131,843	538,865	416,545	76,163
Inventory	860,977	896,734	910,695	905,225	1,058,964	1,161,880	979,281
Prepayments	72,121	55,634	58,834	525,623	105,324	195,901	199,409
<b>Total Current Assets</b>	<b>26,654,250</b>	<b>27,714,820</b>	<b>30,300,326</b>	<b>32,595,149</b>	<b>35,376,779</b>	<b>37,226,671</b>	<b>39,080,498</b>
<b>Long Term Assets</b>							
Fixed Assets (Net)	43,997,303	44,848,922	47,278,778	44,958,768	44,240,513	42,213,829	44,215,043
<b>Total Long Term Assets</b>	<b>43,997,303</b>	<b>44,848,922</b>	<b>47,278,778</b>	<b>44,958,768</b>	<b>44,240,513</b>	<b>42,213,829</b>	<b>44,215,043</b>
<b>TOTAL ASSETS</b>	<b>70,651,553</b>	<b>72,563,742</b>	<b>77,579,104</b>	<b>77,553,917</b>	<b>79,617,292</b>	<b>79,440,500</b>	<b>83,295,541</b>
<b>DEFERRED OUTFLOWS OF RESOURCES</b>							
Deferred Outflows Related to Pensions	-	-	-	-	-	1,309,919	2,297,078
<b>TOTAL DEFERRED OUTFLOWS OF RESOURCES</b>	<b>\$ -</b>	<b>\$ -</b>	<b>\$ -</b>	<b>\$ -</b>	<b>\$ -</b>	<b>\$ 1,309,919</b>	<b>\$ 2,297,078</b>
<b>LIABILITIES AND EQUITY</b>							
<b>Current Liabilities:</b>							
Accounts Payable	\$ 572,876	\$ 615,442	\$ 5,714,658	\$ 586,743	\$ 568,367	\$ 742,854	\$ 748,512
Deferred Revenue	7,632	14,329	-	-	-	-	72,033
Wages and Benefits Payable	1,125,948	1,435,070	2,143,604	1,916,904	1,862,865	1,852,004	2,015,525
<b>Total Current Liabilities</b>	<b>1,706,456</b>	<b>2,064,841</b>	<b>7,858,262</b>	<b>2,503,647</b>	<b>2,431,232</b>	<b>2,594,858</b>	<b>2,836,070</b>
<b>Long Term Liabilities:</b>							
LT Employee Benefits Payable	101,953	89,675	83,301	80,113	62,941	85,364	97,224
Claims/Lawsuits Payable	5,426	5,426	5,426	5,426	5,426	5,426	5,426
Pension Obligations (net)	-	-	-	-	-	11,121,956	13,244,015
<b>Total Long Term Liabilities</b>	<b>107,379</b>	<b>95,101</b>	<b>88,727</b>	<b>85,539</b>	<b>68,367</b>	<b>11,212,746</b>	<b>13,346,665</b>
<b>Total Liabilities</b>	<b>1,813,835</b>	<b>2,159,942</b>	<b>7,946,989</b>	<b>2,589,186</b>	<b>2,499,599</b>	<b>13,807,604</b>	<b>16,182,735</b>
<b>DEFERRED INFLOWS OF RESOURCES</b>							
Deferred Inflows Related to Pensions	-	-	-	-	-	1,693,724	263,351
<b>TOTAL DEFERRED INFLOWS OF RESOURCES</b>	<b>-</b>	<b>-</b>	<b>-</b>	<b>-</b>	<b>-</b>	<b>1,693,724</b>	<b>263,351</b>
<b>EQUITY</b>							
Contributed Capital, Net of Amortization							
Retained Earnings:							
Net Investment in Capital Assets	48,372,268	44,848,922	47,278,778	44,958,768	44,240,513	42,213,829	44,215,043
Unrestricted	20,465,450	25,554,878	22,353,337	30,005,963	32,877,180	23,035,262	24,931,490
<b>Total Equity</b>	<b>68,837,718</b>	<b>70,403,800</b>	<b>69,632,115</b>	<b>74,964,731</b>	<b>77,117,693</b>	<b>65,249,091</b>	<b>69,146,533</b>
<b>TOTAL LIABILITIES &amp; EQUITY</b>	<b>\$ 70,651,553</b>	<b>\$ 72,563,742</b>	<b>\$ 77,579,104</b>	<b>\$ 77,553,917</b>	<b>\$ 79,617,292</b>	<b>\$ 79,056,695</b>	<b>\$ 85,329,268</b>

## **Appendix A: List of Rolling Stock, Facilities and Equipment**

(as of December 30, 2016)

The Public Transportation Management System lists the rolling stock, facilities, and equipment owned by Whatcom Transportation Authority.



# Public Transportation Management System

## Owned Rolling Stock Inventory

Agency/Organization: Whatcom Transportation Authority

Date: DECEMBER 31, 2016

I hereby certify that all information reported in this inventory reflects true, accurate and complete information for the agency/organization listed.

Signature and Title

Date: 06/28/17

ITEM #	Year/Make/Model	VEH CODE	VIN #	AGENCY EQT #	ODO 12/31/16	COND POINTS	Age	REMAIN LIFE	REPL COST	ADA ACCESS	Pass Seats	Fuel Type	WSDOT TITLE	Comments
1	2012 Gillig Hybrid Low Floor	1	15GGD3013C1181146	801	138,642	90	5	7	\$ 800,000.00	Yes	38+2	DE	NO	
2	2012 Gillig Hybrid Low Floor	1	15GGD3015C1181147	802	143,498	90	5	7	\$ 800,000.00	Yes	38+2	DE	NO	
3	2012 Gillig Hybrid Low Floor	1	15GGD3017C1181148	803	143,979	90	5	7	\$ 800,000.00	Yes	38+2	DE	NO	
4	2012 Gillig Hybrid Low Floor	1	15GGD3019C1181149	804	132,431	90	5	7	\$ 800,000.00	Yes	38+2	DE	NO	
5	2012 Gillig Hybrid Low Floor	1	15GGD3015C1181150	805	135,566	90	5	7	\$ 800,000.00	Yes	38+2	DE	NO	
6	2012 Gillig Hybrid Low Floor	1	15GGD301XC1182276	806	131,165	90	5	7	\$ 800,000.00	Yes	38+2	DE	NO	
7	2012 Gillig Hybrid Low Floor	1	15GGD3011C1182277	807	139,817	90	5	7	\$ 800,000.00	Yes	38+2	DE	NO	
8	2012 Gillig Hybrid Low Floor	1	15GGD3013C1182278	808	138,907	90	5	7	\$ 800,000.00	Yes	38+2	DE	NO	
9	2010 Gillig Low Floor	2	15GGB2711A1177812	809	271,097	85	7	5	\$ 520,000.00	Yes	31+2	D	NO	
10	2010 Gillig Low Floor	2	15GGB2713A1177813	810	266,831	85	7	5	\$ 520,000.00	Yes	31+2	D	NO	
11	2007 Gillig Low Floor	2	15GGB271171077573	826	368,212	78	10	2	\$ 520,000.00	Yes	31+2	D	NO	
12	2007 Gillig Low Floor	2	15GGB271371077574	827	357,606	78	10	2	\$ 520,000.00	Yes	31+2	D	NO	
13	2010 Gillig Low Floor	2	15GGB2715A1177814	828	273,937	85	7	5	\$ 520,000.00	Yes	31+2	D	NO	
14	2010 Gillig Low Floor	2	15GGB2717A1177815	829	268,280	85	7	5	\$ 520,000.00	Yes	31+2	D	NO	
15	2010 Gillig Low Floor	2	15GGB2719A1177816	830	264,766	85	7	5	\$ 520,000.00	Yes	31+2	D	NO	
16	2016 Gillig Low Floor	2	15GGD2716G1188128	831	9,367	99	1	11	\$ 520,000.00	Yes	35+2	D	NO	
17	2016 Gillig Low Floor	1	15GGD2718G1188129	832	10,727	99	1	11	\$ 520,000.00	Yes	35+2	D	NO	
18	2016 Gillig Low Floor	1	15GGD2714G1188130	833	9,675	99	1	11	\$ 520,000.00	Yes	35+2	D	NO	

U:\Reports\Rolling Stock\Rolling stock TDP December 2016.xlsx

# Public Transportation Management System

## Owned Rolling Stock Inventory

Agency/Organization: Whatcom Transportation Authority

Date: DECEMBER 31, 2016

I hereby certify that all information reported in this inventory reflects true, accurate and complete information for the agency/organization listed.

Signature and Title

Date: 06/28/17

ITEM #	Year/Make/Model	VEH CODE	VIN #	AGENCY EQT #	ODO 12/31/16	COND POINTS	Age	REMAIN LIFE	REPL COST	ADA ACCESS	Pass Seats	Fuel Type	WSDOT TITLE	Comments
19	2016 Gillig Low Floor	1	15GGD2716G1188131	834	9,268	99	1	11	\$ 520,000.00	Yes	35+2	D	NO	
20	2016 Gillig Low Floor	1	15GGD2718G1188132	835	8,857	99	1	11	\$ 520,000.00	Yes	35+2	D	NO	
21	2016 Gillig Low Floor	1	15GGD271XG1188133	836	8,194	99	1	11	\$ 520,000.00	Yes	35+2	D	NO	
22	2016 Gillig Low Floor	1	15GGD2711G1188134	837	9,698	99	1	11	\$ 520,000.00	Yes	35+2	D	NO	
23	1997 Orion V	1	1VH569U76V6033402	844	557,428	70	20	0	\$ 520,000.00	Yes	43+2	D	NO	Await sale
24	1997 Orion V	1	1VH569U78V6033403	845	538,546	70	20	0	\$ 520,000.00	Yes	43+2	D	NO	Await sale
25	1997 Orion V	1	1VH569U7XV6033404	846	534,220	70	20	0	\$ 520,000.00	Yes	43+2	D	NO	Await sale
26	2007 Gillig Low Floor	1	15GGD271771078226	851	331,106	78	10	2	\$ 520,000.00	Yes	38+2	D	NO	
27	2007 Gillig Low Floor	1	15GGD271971078227	852	334,948	78	10	2	\$ 520,000.00	Yes	38+2	D	NO	
28	2007 Gillig Low Floor	1	15GGD271971078227	853	333,289	78	10	2	\$ 520,000.00	Yes	38+2	D	NO	
29	2007 Gillig Low Floor	1	15GGD271071078228	854	337,583	78	10	2	\$ 520,000.00	Yes	38+2	D	NO	
30	2007 Gillig Low Floor	1	15GGD271671078230	855	338,797	78	10	2	\$ 520,000.00	Yes	38+2	D	NO	
31	2009 Gillig Low Floor	1	15GGD271091176933	856	287,543	82	8	4	\$ 520,000.00	Yes	38+2	D	NO	
32	2009 Gillig Low Floor	1	15GGD271291176934	857	282,919	82	8	4	\$ 520,000.00	Yes	38+2	D	NO	
33	2009 Gillig Low Floor	1	15GGD271491176935	858	281,344	82	8	4	\$ 520,000.00	Yes	38+2	D	NO	
34	2009 Gillig Low Floor	1	15GGD271691176936	859	285,250	82	8	4	\$ 520,000.00	Yes	38+2	D	NO	
35	2004 Gillig Low Floor	3	15GGE291X41090662	864	447,191	75	13	0	\$ 520,000.00	Yes	30+2	D	NO	
36	2004 Gillig Low Floor	3	15GGE291141090663	865	439,764	75	13	0	\$ 520,000.00	Yes	30+2	D	NO	

U:\Reports\Rolling Stock\Rolling stock TDP December 2016.xlsx

# Public Transportation Management System

## Owned Rolling Stock Inventory

Agency/Organization: Whatcom Transportation Authority

Date: DECEMBER 31, 2016

I hereby certify that all information reported in this inventory reflects true, accurate and complete information for the agency/organization listed.

Signature and Title \_\_\_\_\_

Date: 06/28/17

ITEM #	Year/Make/Model	VEH CODE	VIN #	AGENCY EQT #	ODO 12/31/16	COND POINTS	Age	REMAIN LIFE	REPL COST	ADA ACCESS	Pass Seats	Fuel Type	WSDOT TITLE	Comments
37	2004 Gillig Low Floor	3	15GGB291341090664	866	438,509	75	13	0	\$ 520,000.00	Yes	30+2	D	NO	
38	2008 Gillig Low Floor	3	15GGB271381091483	867	280,995	80	9	3	\$ 520,000.00	Yes	28+2	D	NO	
39	2008 Gillig Low Floor	3	15GGB271581091484	868	291,911	80	9	3	\$ 520,000.00	Yes	28+2	D	NO	
40	2008 Gillig Low Floor	3	15GGB271781091485	869	291,658	80	9	3	\$ 520,000.00	Yes	28+2	D	NO	
41	2009 Gillig Low Floor	1	15GGD271891176937	871	273,642	82	8	4	\$ 520,000.00	Yes	38+2	D	NO	
42	2009 Gillig Low Floor	1	15GGD271X91176938	872	277,160	82	8	4	\$ 520,000.00	Yes	38+2	D	NO	
43	2009 Gillig Low Floor	1	15GGD271191176939	873	281,939	82	8	4	\$ 520,000.00	Yes	38+2	D	NO	
44	2009 Gillig Low Floor	1	15GGD271891176940	874	284,561	85	7	4	\$ 520,000.00	Yes	38+2	D	NO	
45	2009 Gillig Low Floor	1	15GGD271X91176941	875	283,458	82	8	4	\$ 520,000.00	Yes	38+2	D	NO	
46	2009 Gillig Low Floor	1	15GGD271191176942	876	284,686	82	8	4	\$ 520,000.00	Yes	38+2	D	NO	
47	2009 Gillig Low Floor	1	15GGD271391176943	877	279,638	82	8	4	\$ 520,000.00	Yes	38+2	D	NO	
48	2009 Gillig Low Floor	1	15GGD271591176944	878	280,225	82	8	4	\$ 520,000.00	Yes	38+2	D	NO	
49	2009 Gillig Low Floor	1	15GGD271791176945	879	278,892	82	8	4	\$ 520,000.00	Yes	38+2	D	NO	
50	2009 Gillig Low Floor	1	15GGD271991176946	880	279,255	82	8	4	\$ 520,000.00	Yes	38+2	D	NO	
51	2010 Gillig Low Floor	1	15GGD2717A1177629	881	248,823	85	7	5	\$ 520,000.00	Yes	38+2	D	NO	
52	2010 Gillig Low Floor	1	15GGD2713A1177630	882	240,413	85	7	5	\$ 520,000.00	Yes	38+2	D	NO	
53	2010 Gillig Low Floor	1	15GGD2715A1177631	883	254,658	85	7	5	\$ 520,000.00	Yes	38+2	D	NO	
54	2010 Gillig Low Floor	1	15GGD2717A1177632	884	247,564	85	7	5	\$ 520,000.00	Yes	38+2	D	NO	

U:\Reports\Rolling Stock\Rolling stock TDP December 2016.xlsx

R:\ServDev\TDP\2016 TDP\TDP-2017.docx  
July 6, 2017

# Public Transportation Management System

## Owned Rolling Stock Inventory

Agency/Organization: Whatcom Transportation Authority

Date: DECEMBER 31, 2016

I hereby certify that all information reported in this inventory reflects true, accurate and complete information for the agency/organization listed.

Signature and Title

Date: 06/30/17

ITEM #	Year/Make/Model	VEH CODE	VIN #	AGENCY EQT #	ODO 12/31/16	COND POINTS	Age	REMAIN LIFE	REPL COST	ADA ACCESS	Pass Seats	Fuel Type	WSDOT TITLE	Comments
55	2010 Gillig Low Floor	1	15GGD2719A1177633	885	250,422	85	7	5	\$ 520,000.00	Yes	38+2	D	NO	
56	2010 Gillig Low Floor	1	15GGD2710A1177634	886	247,940	85	7	5	\$ 520,000.00	Yes	38+2	D	NO	
57	2011 Gillig Low Floor	1	15GGD2714B1179954	887	188,904	88	6	6	\$ 520,000.00	Yes	38+2	D	NO	
58	2011 Gillig Low Floor	1	15GGD2716B1179955	888	186,028	88	6	6	\$ 520,000.00	Yes	38+2	D	NO	
59	2011 Gillig Low Floor	1	15GGD2718B1179956	889	182,508	88	6	6	\$ 520,000.00	Yes	38+2	D	NO	
60	2011 Gillig Low Floor	1	15GGD271XB1179957	890	191,093	88	6	6	\$ 520,000.00	Yes	38+2	D	NO	
61	2011 Gillig Low Floor	1	15GGD2711B1179958	891	179,553	88	6	6	\$ 520,000.00	Yes	38+2	D	NO	
62	2011 Gillig Low Floor	1	15GGD2713B1179959	892	181,684	88	6	6	\$ 520,000.00	Yes	38+2	D	NO	
63	2011 Gillig Low Floor	1	15GGD271XB1179960	893	190,146	88	6	6	\$ 520,000.00	Yes	38+2	D	NO	
64	2011 Gillig Low Floor	1	15GGD2711B1179961	894	188,279	88	6	6	\$ 520,000.00	Yes	38+2	D	NO	
65	2011 Chev Arboc	11	1GB9G5AG0A1161900	701	117,711	70	6	0	\$ 132,000.00	Yes	13+3	G	NO	
66	2011 Chev Arboc	11	1GB9G5AG0A1162156	702	118,133	70	6	0	\$ 132,000.00	Yes	13+3	G	NO	
67	2011 Chev Arboc	11	1GB6G5BG9B1151756	703	95,192	70	6	0	\$ 132,000.00	Yes	13+3	G	YES	
68	2011 Chev Arboc	11	1GB6G5BGXB1150812	704	106,707	70	6	0	\$ 132,000.00	Yes	13+3	G	YES	
69	2011 Chev Arboc	11	1GB6G5BG4B1166097	705	102,700	70	6	0	\$ 132,000.00	Yes	13+3	G	YES	
70	2012 Chev Arboc	11	1GB6G5BG0C1151324	706	98,020	75	5	1	\$ 132,000.00	Yes	13+3	G	YES	
71	2012 Chev Arboc	11	1GB6G5BG0C1151467	707	94,373	75	5	1	\$ 132,000.00	Yes	13+3	G	YES	
72	2012 Chev Arboc	11	1GB6G5BG1C1151722	708	94,334	75	5	1	\$ 132,000.00	Yes	13+3	G	YES	
73	2012 Chev Arboc	11	1GB6G5BG3C1152449	709	96,851	75	5	1	\$ 132,000.00	Yes	13+3	G	YES	
74	2012 Chev Arboc	11	1GB6G5BG6C1152591	710	91,774	75	5	1	\$ 132,000.00	Yes	13+3	G	YES	
75	2012 Chev Arboc	11	1GB6G5BG2C1153589	711	89,639	75	5	1	\$ 132,000.00	Yes	13+3	G	YES	
76	2014 Chev Arboc	11	1GB6G5BG1E1105293	712	61,571	85	3	3	\$ 132,000.00	Yes	13+3	G	YES	

U:\Reports\Rolling Stock\Rolling stock TDP December 2016.xlsx

R:\ServDev\TDP\2016 TDP\TDP-2017.docx  
July 6, 2017

# Public Transportation Management System

## Owned Rolling Stock Inventory

Agency/Organization: Whatcom Transportation Authority

Date: DECEMBER 31, 2016

I hereby certify that all information reported in this inventory reflects true, accurate and complete information for the agency/organization listed.

Signature and Title

Date: 06/30/17

ITEM #	Year/Make/Model	VEH CODE	VIN #	AGENCY EQT #	ODO 12/31/16	COND POINTS	Age	REMAIN LIFE	REPL COST	ADA ACCESS	Pass Seats	Fuel Type	WSDOT TITLE	Comments
77	2014 Chev Arboc	11	1GB6G5BG4E1105644	713	64,372	85	3	3	\$ 132,000.00	Yes	13+3	G	YES	
78	2014 Chev Arboc	11	1GB6G5BG3E1106235	714	63,808	85	3	3	\$ 132,000.00	Yes	13+3	G	YES	
79	2014 Chev Arboc	11	1GB6G5BG9E1160286	715	62,412	85	3	3	\$ 132,000.00	Yes	13+3	G	YES	
80	2014 Chev Arboc	11	1GB6G5BG6E1106472	716	61,488	85	3	3	\$ 132,000.00	Yes	13+3	G	YES	
81	2014 Chev Arboc	11	1GB6G5BG2E1106596	717	59,441	85	3	3	\$ 132,000.00	Yes	13+3	G	YES	
82	2016 Eldorado Aerotech	11	1FDFE4FS1HDC02390	728	4,243	99	0	6	\$ 104,000.00	Yes	15+4	G	NO	
83	2016 Eldorado Aerotech	11	1FDFE4FS3HDC02391	729	4,209	99	0	6	\$ 104,000.00	Yes	15+4	G	NO	
84	2016 Eldorado Aerotech	11	1FDFE4FS5HDC02392	730	3,681	99	0	6	\$ 104,000.00	Yes	15+4	G	NO	
85	2016 Eldorado Aerotech	11	1FDFE4FS7HDC02393	731	3,329	99	0	6	\$ 104,000.00	Yes	15+4	G	NO	
86	2016 Eldorado Aerotech	11	1FDFE4FS9HDC02394	732	2,438	99	0	6	\$ 104,000.00	Yes	15+4	G	NO	
87	2016 Eldorado Aerotech	11	1FDFE4FS0HDC02395	733	2,366	99	0	6	\$ 104,000.00	Yes	15+4	G	NO	
88	2016 Eldorado Aerotech	11	1FDFE4FS2HDC02396	734	1,905	99	0	6	\$ 104,000.00	Yes	15+4	G	NO	
89	2016 Eldorado Aerotech	11	1FDFE4FS4HDC02397	735	1,919	99	0	6	\$ 104,000.00	Yes	15+4	G	NO	
90	2016 Eldorado Aerotech	11	1FDFE4FS6HDC02398	736	4,442	99	0	6	\$ 104,000.00	Yes	15+4	G	NO	
91	2016 Eldorado Aerotech	11	1FDFE4FS8HDC02399	737	1,914	99	0	6	\$ 104,000.00	Yes	15+4	G	NO	
92	2016 Eldorado Aerotech	11	1FDFE4FS0HDC02400	738	1,972	99	0	6	\$ 104,000.00	Yes	15+4	G	NO	
93	2016 Eldorado Aerotech	11	1FDFE4FS2HDC02401	739	1,951	99	0	6	\$ 104,000.00	Yes	15+4	G	NO	
94	2016 Eldorado Aerotech	11	1FDFE4FS4HDC02402	740	1,969	99	0	6	\$ 104,000.00	Yes	15+4	G	NO	
95	2015 Eldorado Aerotech	11	1FDFE4FS5FDA34881	741	41,148	90	2	4	\$ 104,000.00	Yes	15+4	G	NO	
96	2015 Eldorado Aerotech	11	1FDFE4FS7FDA34882	742	38,569	90	2	4	\$ 104,000.00	Yes	15+4	G	NO	

U:\Reports\Rolling Stock\Rolling stock TDP December 2016.xlsx

R:\ServDev\TDP\2016 TDP\TDP-2017.docx  
July 6, 2017



# Public Transportation Management System

## Owned Rolling Stock Inventory

Agency/Organization: Whatcom Transportation Authority

Date: DECEMBER 31, 2016

I hereby certify that all information reported in this inventory reflects true, accurate and complete information for the agency/organization listed.

Signature and Title \_\_\_\_\_

Date: 06/30/17

ITEM #	Year/Make/Model	VEH CODE	VIN #	AGENCY BQT #	ODO 12/31/16	COND POINTS	Age	REMAIN LIFE	REPL COST	ADA ACCESS	Pass Seats	Fuel Type	WSDOT TITLE	Comments
97	2015 Eldorado Aerotech	11	1FDFE4FS9FDA34883	743	38,617	90	2	4	\$ 104,000.00	Yes	15+4	G	NO	
98	2015 Eldorado Aerotech	11	1FDFE4FS2FDA34885	744	39,607	90	2	4	\$ 104,000.00	Yes	15+4	G	NO	
99	2015 Eldorado Aerotech	11	1FDFE4FS4FDA34886	745	37,832	90	2	4	\$ 104,000.00	Yes	15+4	G	NO	
100	2015 Eldorado Aerotech	11	1FDFE4FS6FDA34887	746	35,549	90	2	4	\$ 104,000.00	Yes	15+4	G	NO	
101	2009 Eldorado Aerotech	11	1FDFE45S89DA47193	769	181,533	70	8	0	\$ 104,000.00	Yes	15+4	G	NO	Await sale
102	2009 Eldorado Aerotech	11	1FDFE45S39DA47196	772	183,878	70	8	0	\$ 104,000.00	Yes	15+4	G	NO	Await sale
103	2010 Eldorado Aerotech	11	1FDFE4FS3ADA78919	774	162,198	70	7	0	\$ 104,000.00	Yes	15+4	G	NO	Await sale
104	2010 Eldorado Aerotech	11	1FDFE4FSXADA78920	775	164,756	70	7	0	\$ 104,000.00	Yes	15+4	G	NO	Await sale
105	2010 Eldorado Aerotech	11	1FDFE4FS1ADA78921	776	163,136	75	7	0	\$ 104,000.00	Yes	15+4	G	NO	
106	2015 Eldorado Aerotech	11	1FDFE4FS3ADA78922	777	165,434	70	7	0	\$ 104,000.00	Yes	15+4	G	NO	Await sale
107	2015 Eldorado Aerotech	11	1FDFE4FS5ADA78923	778	161,291	70	7	0	\$ 104,000.00	Yes	15+4	G	NO	Await sale
108	2010 Eldorado Aerotech	11	1FDFE4FS1ADA78949	779	166,512	70	7	0	\$ 104,000.00	Yes	15+4	G	NO	Await sale
109	2010 Eldorado Aerotech	11	1FDFE4FS8ADA78950	780	162,153	75	7	0	\$ 104,000.00	Yes	15+4	G	NO	
110	2010 Eldorado Aerotech	11	1FDFE4FSXADA78951	781	163,009	70	7	0	\$ 104,000.00	Yes	15+4	G	NO	Await sale
111	2010 Eldorado Aerotech	11	1FDFE4FS1ADA78952	782	161,438	70	7	0	\$ 104,000.00	Yes	15+4	G	NO	Await sale
112	2014 Eldorado Aerotech	11	1FDFE4FS5DDB36498	783	79,009	85	3	3	\$ 104,000.00	Yes	15+4	G	YES	
113	2014 Eldorado Aerotech	11	1FDFE4FS7DDB36499	784	81,634	85	3	3	\$ 104,000.00	Yes	15+4	G	YES	
114	2014 Eldorado Aerotech	11	1FDFE4FSXDDDB36500	785	80,030	85	3	3	\$ 104,000.00	Yes	15+4	G	YES	

U:\Reports\Rolling Stock\Rolling stock TDP December 2016.xlsx

R:\ServDev\TDP\2016 TDP\TDP-2017.docx  
July 6, 2017

# Public Transportation Management System

## Owned Rolling Stock Inventory

Agency/Organization: Whatcom Transportation Authority

Date: DECEMBER 31, 2016

I hereby certify that all information reported in this inventory reflects true, accurate and complete information for the agency/organization listed.

Signature and Title \_\_\_\_\_

Date: 06/30/17

ITEM #	Year/Make/Model	VEH CODE	VIN #	AGENCY EQT #	ODO 12/31/16	COND POINTS	Age	REMAIN LIFE	REPL COST	ADA ACCESS	Pass Seats	Fuel Type	WSDOT TITLE	Comments
115	2014 Eldorado Aerotech	11	1FDFF4FS1DDB36501	786	79,728	85	3	3	\$ 104,000.00	Yes	15+4	G	YES	
116	2014 Eldorado Aerotech	11	1FDFF4FS3DDB36502	787	78,812	85	3	3	\$ 104,000.00	Yes	15+4	G	YES	
117	2011 Dodge Caravan	13	2D4RN4DG2BR707961	604	98,466	75	6	0	\$ 30,000.00	NO	7	G	NO	
118	2011 Dodge Caravan	13	2D4RN4DG4BR707962	605	63,473	75	6	0	\$ 30,000.00	NO	7	G	NO	
119	2012 Dodge Caravan	13	2C4RDGBG8CR312365	606	58,536	80	5	1	\$ 30,000.00	NO	7	G	NO	
120	2014 Dodge Caravan	13	2C4RDGBG8ER393483	607	36,520	90	3	1	\$ 30,000.00	NO	7	G	NO	
121	2014 Dodge Caravan	13	2C4RDGBG8ER393484	608	48,745	90	3	1	\$ 30,000.00	NO	7	G	NO	
122	2012 Chev Express Van	13	1GAZGYFA0C1158461	616	58,091	88	5	1	\$ 37,000.00	NO	11	G	NO	
123	2012 Chev Express Van	13	1GAZGYFA8C1158627	617	46,308	87	5	1	\$ 37,000.00	NO	11	G	NO	
124	2012 Chev Express Van	13	1GAZGYFA2C1158929	618	72,422	85	5	1	\$ 37,000.00	NO	11	G	NO	
125	2012 Chev Express Van	13	1GAZGYFA1C1158968	619	53,680	88	5	1	\$ 37,000.00	NO	11	G	NO	
126	2013 Ford E350 Club Wagon	13	1FBNE3BL4DDA74489	620	24,459	90	4	1	\$ 37,000.00	NO	12	G	NO	
127	2013 Ford E350 Club Wagon	13	1FBNE3BL0DDA74490	621	118,220	78	4	1	\$ 37,000.00	NO	12	G	NO	
128	2013 Ford E350 Club Wagon	13	1FBNE3BL2DDA74491	622	49,872	88	4	1	\$ 37,000.00	NO	12	G	NO	
129	2013 Ford E350 Club Wagon	13	1FBNE3BL4DDA74492	623	28,111	95	4	1	\$ 37,000.00	NO	12	G	NO	
130	2011 Ford E350 XLT SD	13	1FBSS3BL6BDA78729	637	44,964	87	6	0	\$ 37,000.00	NO	15	G	NO	
131	2011 Ford E350 XLT SD	13	1FBSS3BL2BDA78730	638	52,570	87	6	0	\$ 37,000.00	NO	15	G	NO	
132	2011 Ford E350 XLT SD	13	1FBSS3BL4BDA78731	639	76,613	80	6	0	\$ 37,000.00	NO	15	G	NO	

U:\Reports\Rolling Stock\Rolling stock TDP December 2016.xlsx

R:\ServDev\TDP\2016 TDP\TDP-2017.docx  
July 6, 2017

# Public Transportation Management System

## Owned Rolling Stock Inventory

Agency/Organization: Whatcom Transportation Authority

Date: DECEMBER 31, 2016

I hereby certify that all information reported in this inventory reflects true, accurate and complete information for the agency/organization listed.

Signature and Title \_\_\_\_\_

Date: 06/30/17

ITEM #	Year/Make/Model	VEH CODE	VIN #	AGENCY BQT #	ODO 12/31/16	COND POINTS	Age	REMAIN LIFE	REPL COST	ADA ACCESS	Pass Seats	Fuel Type	WSDOT TITLE	Comments
133	2012 Chev Express Van	13	1GAZG1FG8C1157232	640	77,884	80	5	0	\$ 37,000.00	NO	14	G	NO	
134	2012 Chev Express Van	13	1GAZG1FG5C1158385	641	90,489	80	5	0	\$ 37,000.00	NO	14	G	NO	
135	2012 Chev Express Van	13	1GAZG1FG2C1157128	642	111,852	78	5	0	\$ 37,000.00	NO	14	G	NO	
136	2012 Chev Express Van	13	1GAZG1FG7C1157576	643	138,192	78	5	0	\$ 37,000.00	NO	14	G	NO	
137	2013 Ford E350 XLT SD	13	1GAZG1FG5D1157822	644	58,626	88	4	1	\$ 37,000.00	NO	15	G	NO	
138	2013 Ford E350 XLT SD	13	1GAZG1FG6D1158641	645	64,079	88	4	1	\$ 37,000.00	NO	15	G	NO	
139	2013 Ford E350 XLT SD	13	1GAZG1FG2D1152667	646	48,161	90	4	1	\$ 37,000.00	NO	15	G	NO	
140	2013 Ford E350 XLT SD	13	1GAZG1FG4D1159190	647	98,770	80	4	1	\$ 37,000.00	NO	15	G	NO	
141	2013 Ford E350 XLT SD	13	1GAZG1FG3D1159293	648	64,976	85	4	1	\$ 37,000.00	NO	15	G	NO	
142	2013 Ford E350 XLT SD	13	1GAZG1FG0D1159607	649	52,789	88	4	2	\$ 37,000.00	NO	15	G	NO	
143	2013 Ford E350 XLT SD	13	1GAZG1FG8D1159757	650	55,634	88	4	2	\$ 37,000.00	NO	15	G	NO	
144	2013 Ford E350 XLT SD	13	1GAZG1FG2D1159849	651	36,727	92	4	2	\$ 37,000.00	NO	15	G	NO	
145	2009 Chevy Express Van	13	1GAGG25K391143332	656	119,831	75	8	0	\$ 37,000.00	NO	11	G	NO	
146	2009 Chevy Express Van	13	1GAGG25K991143142	657	103,433	75	8	0	\$ 37,000.00	NO	11	G	NO	
147	2011 Ford E350 XLT SD	13	1FBNE3BL9BDA78714	659	30,152	90	5	2	\$ 37,000.00	NO	11	G	NO	
148	2011 Ford E350 XLT SD	13	1FBNE3BL0BDA78715	660	49,321	90	5	2	\$ 37,000.00	NO	11	G	NO	
149	2014 Chevy Express Van	13	1GAZGYFA7E1210512	661	42,963	90	3	2	\$ 37,000.00	NO	11	G	NO	
150	2014 Chevy Express Van	13	1GAZGYFA9E1208275	662	14,310	95	3	2	\$ 37,000.00	NO	11	G	NO	

U:\Reports\Rolling Stock\Rolling stock TDP December 2016.xlsx

R:\ServDev\TDP\2016 TDP\TDP-2017.docx  
July 6, 2017



<h2 style="margin: 0;">Public Transportation Management System</h2> <h3 style="margin: 10px 0 0 0;">Owned Rolling Stock Inventory</h3>						<p><i>I hereby certify that all information reported in this inventory reflects true, accurate and complete information for the agency/organization listed.</i></p>									
Agency/Organization: Whatcom Transportation Authority						Signature and Title _____									
Date: DECEMBER 31, 2016						Date: 06/30/17									
ITEM #	Year/Make/Model	VEH CODE	VIN #	AGENCY EQT #	ODO 12/31/16	COND POINTS	Age	REMAIN LIFE	REPL COST	ADA ACCESS	Pass Seats	Fuel Type	WSDOT TITLE	Comments	
151	2014 Chevy Express Van	13	1GAZG1FG7E1209615	679	54,341	88	3	2	\$ 37,000.00	NO	15	G	NO		
<b>Comments</b>															
Vehicles 844, 845 and 846 were out of service awaiting <i>sale</i> on Dec 31, 2016.															
Vehicles 728, 729, 730, 731, 732, 733 and 736 went into service in late 2016.															
Vehicles 734-735, 737-740 were in make ready status on Dec 31, 2016															
Vehicles 769, 772, 774, 775, 777, 778, 778, 779, 781 and 782 were in make ready for <i>sale</i> status on Dec 31, 2016															